

Change Notice YB Series Illuminated Pushbuttons

Change of Bicolor LED Specification for AT621 2-Volt without Resistor

Type of Change:

- Engineering Part Number
- Product Appearance

The YB Series Illuminated Pushbuttons and Indicators will have a change to the AT621 2-volt 6-element bicolor LEDs without resistors. The change will effect all models, both standard and custom. Differences in the LED specification values are outlined in the following table.

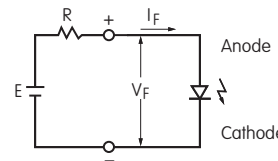


YB Pushbuttons

Electrical Specifications for AT621 Bicolor LED				
<p>Bicolor AT621</p> <div style="border: 1px solid black; padding: 2px; display: inline-block; margin-bottom: 5px;">2CF</div> Red/Green <p>T-1½ Bi-pin</p>	Electrical specifications are determined at a basic temperature of 25°C.	Before Change	After Change	<p>AT621 Bicolor LED 2-volt 6-element without Resistor</p>
	Bicolor LED is translucent white in OFF state.	02	02	
	Maximum Forward Current I_{FM}	60 mA	60 mA	
	Typical Forward Current I_F	45 mA	45 mA	
	Forward Voltage (red/green) V_F	2.0 / 2.1V	1.9 / 2.1V	
	Current Reduction Rate Above 25°C ΔI_F	0.80 mA/°C	0.80 mA/°C	
	Ambient Temperature Range	-25 ~ +50 °C	-25 ~ +50 °C	

Notes

- The LED circuit is isolated and requires an external power source.
- If the source voltage exceeds the rated voltage, a ballast resistor is required. The resistor value can be calculated by using the formula shown here.
- The change to AT621 bicolor LED does not effect any external dimensions of the switches or indicators.
- Contact the factory if further details are needed.



$$R = \frac{E - V_F}{I_F}$$

Where: R = Resistor Value (Ohms)
 E = Source Voltage (V)
 V_F = Forward Voltage (V)
 I_F = Forward Current (A)

Effective Date

Changes to AT621 Bicolor LEDs will be effective September 2015.

NKK SWITCHES CO., LTD. <http://www.nkk.com> E-mail: nkkswitches@nkkswitches.co.jp

715-1 Unane, Takatsu-ku, Kawasaki-shi, 213-8553 Japan TEL: +81 44 813 8001 FAX: +81 44 813 8031

Change Notice YB Series Illuminated Pushbuttons

Change of Bicolor LED Specification for AT621 2-Volt without Resistor

The AT621 bicolor LEDs will have changes to electrical specifications. These changes will effect all models, both standard and custom, of YB illuminated pushbuttons and indicators. Standard part numbers effected by these changes are listed in the following tables.



AT621 Bicolor LED

YB15 Part Numbers Effected by AT621 Bicolor LED Specification Change

YB15SKW01-2CF02-JB	YB15SKW03-2CF02-JB	YB15SKG01-2CF02-JB	YB15SKG03-2CF02-JB
YB15CKW01-2CF02-JB	YB15CKW03-2CF02-JB	YB15CKG01-2CF02-JB	YB15CKG03-2CF02-JB
YB15RKW01-2CF02-JB	YB15RKW03-2CF02-JB	YB15RKG01-2CF02-JB	YB15RKG03-2CF02-JB
YB15KKW01-2CF02-JB	YB15KKW03-2CF02-JB	YB15KKG01-2CF02-JB	YB15KKG03-2CF02-JB
YB15MKW01-2CF02-JB	YB15MKW03-2CF02-JB	YB15MKG01-2CF02-JB	YB15MKG03-2CF02-JB
YB15NKW01-2CF02-JB	YB15NKW03-2CF02-JB	YB15NKG01-2CF02-JB	YB15NKG03-2CF02-JB
YB15WSKW01-2CF02-JB	YB15WSKW03-2CF02-JB	YB15WSKG01-2CF02-JB	YB15WSKG03-2CF02-JB
YB15WCKW01-2CF02-JB	YB15WCKW03-2CF02-JB	YB15WCKG01-2CF02-JB	YB15WCKG03-2CF02-JB
YB15WRKW01-2CF02-JB	YB15WRKW03-2CF02-JB	YB15WRKG01-2CF02-JB	YB15WRKG03-2CF02-JB

YB16 Part Numbers Effected by AT621 Bicolor LED Specification Change

YB16SKW01-2CF02-JB	YB16SKW03-2CF02-JB	YB16SKG01-2CF02-JB	YB16SKG03-2CF02-JB
YB16CKW01-2CF02-JB	YB16CKW03-2CF02-JB	YB16CKG01-2CF02-JB	YB16CKG03-2CF02-JB
YB16RKW01-2CF02-JB	YB16RKW03-2CF02-JB	YB16RKG01-2CF02-JB	YB16RKG03-2CF02-JB
YB16KKW01-2CF02-JB	YB16KKW03-2CF02-JB	YB16KKG01-2CF02-JB	YB16KKG03-2CF02-JB
YB16MKW01-2CF02-JB	YB16MKW03-2CF02-JB	YB16MKG01-2CF02-JB	YB16MKG03-2CF02-JB
YB16NKW01-2CF02-JB	YB16NKW03-2CF02-JB	YB16NKG01-2CF02-JB	YB16NKG03-2CF02-JB
YB16WSKW01-2CF02-JB	YB16WSKW03-2CF02-JB	YB16WSKG01-2CF02-JB	YB16WSKG03-2CF02-JB
YB16WCKW01-2CF02-JB	YB16WCKW03-2CF02-JB	YB16WCKG01-2CF02-JB	YB16WCKG03-2CF02-JB
YB16WRKW01-2CF02-JB	YB16WRKW03-2CF02-JB	YB16WRKG01-2CF02-JB	YB16WRKG03-2CF02-JB

NKK SWITCHES CO., LTD. <http://www.nkk.com> E-mail: nkkswitches@nkkswitches.co.jp

715-1 Unane, Takatsu-ku, Kawasaki-shi, 213-8553 Japan TEL: +81 44 813 8001 FAX: +81 44 813 8031

Change Notice YB Series Illuminated Pushbuttons

Change of Bicolor LED Specification for AT621 2-Volt without Resistor

YB25 Part Numbers Effected by AT621 Bicolor LED Specification Change

YB25SKW01-2CF02-JB	YB25SKW03-2CF02-JB	YB25SKG01-2CF02-JB	YB25SKG03-2CF02-JB
YB25CKW01-2CF02-JB	YB25CKW03-2CF02-JB	YB25CKG01-2CF02-JB	YB25CKG03-2CF02-JB
YB25RKW01-2CF02-JB	YB25RKW03-2CF02-JB	YB25RKG01-2CF02-JB	YB25RKG03-2CF02-JB
YB25KKW01-2CF02-JB	YB25KKW03-2CF02-JB	YB25KKG01-2CF02-JB	YB25KKG03-2CF02-JB
YB25MKW01-2CF02-JB	YB25MKW03-2CF02-JB	YB25MKG01-2CF02-JB	YB25MKG03-2CF02-JB
YB25NKW01-2CF02-JB	YB25NKW03-2CF02-JB	YB25NKG01-2CF02-JB	YB25NKG03-2CF02-JB
YB25WSKW01-2CF02-JB	YB25WSKW03-2CF02-JB	YB25WSKG01-2CF02-JB	YB25WSKG03-2CF02-JB
YB25WCKW01-2CF02-JB	YB25WCKW03-2CF02-JB	YB25WCKG01-2CF02-JB	YB25WCKG03-2CF02-JB
YB25WRKW01-2CF02-JB	YB25WRKW03-2CF02-JB	YB25WRKG01-2CF02-JB	YB25WRKG03-2CF02-JB

YB26 Part Numbers Effected by AT621 Bicolor LED Specification Change

YB26SKW01-2CF02-JB	YB26SKW03-2CF02-JB	YB26SKG01-2CF02-JB	YB26SKG03-2CF02-JB
YB26CKW01-2CF02-JB	YB26CKW03-2CF02-JB	YB26CKG01-2CF02-JB	YB26CKG03-2CF02-JB
YB26RKW01-2CF02-JB	YB26RKW03-2CF02-JB	YB26RKG01-2CF02-JB	YB26RKG03-2CF02-JB
YB26KKW01-2CF02-JB	YB26KKW03-2CF02-JB	YB26KKG01-2CF02-JB	YB26KKG03-2CF02-JB
YB26MKW01-2CF02-JB	YB26MKW03-2CF02-JB	YB26MKG01-2CF02-JB	YB26MKG03-2CF02-JB
YB26NKW01-2CF02-JB	YB26NKW03-2CF02-JB	YB26NKG01-2CF02-JB	YB26NKG03-2CF02-JB
YB26WSKW01-2CF02-JB	YB26WSKW03-2CF02-JB	YB26WSKG01-2CF02-JB	YB26WSKG03-2CF02-JB
YB26WCKW01-2CF02-JB	YB26WCKW03-2CF02-JB	YB26WCKG01-2CF02-JB	YB26WCKG03-2CF02-JB
YB26WRKW01-2CF02-JB	YB26WRKW03-2CF02-JB	YB26WRKG01-2CF02-JB	YB26WRKG03-2CF02-JB

YB Indicator Part Numbers Effected by AT621 Bicolor LED Specification Change

YB01KW01-2CF02-JB	YB02KW01-2CF02-JB	YB03KW01-2CF02-JB	YB04KW01-2CF02-JB
YB01WKW01-2CF02-JB	YB02WKW01-2CF02-JB	YB03WKW01-2CF02-JB	YB05KW01-2CF02-JB
			YB06KW01-2CF02-JB

NKK SWITCHES CO., LTD. <http://www.nkk.com> E-mail: nkkswitches@nkkswitches.co.jp
 715-1 Unane, Takatsu-ku, Kawasaki-shi, 213-8553 Japan TEL: +81 44 813 8001 FAX: +81 44 813 8031